

# Zone Labs

## IMsecure™ Pro

Datasheet



## Keep Your Instant Messaging Safe

There's safety in numbers—or is there? Instant messaging™ software is installed on more than 275 million computers, but is it safe? The reality is, IM software can open a Pandora's box of security threats on your computer, including:

- **Privacy concerns** such as identity theft, theft of confidential information and interception of unencrypted messages.
- **Damage from hackers and viruses** written specifically to exploit IM as a way to sabotage your PC.
- **Productivity losses** from spam and other unwanted communications.
- **Disregard of parental controls**, ranging from the annoying—kids infecting their parents' PC with infected downloads—to the tragic, such as children being abducted by strangers they meet on IM systems.

---

"Instant messaging is being used a lot and people aren't paying attention to the security risks that are out there. People are still way too trusting, and they think instant messaging can't be used against them. But it can."

— Art Manion, Internet Security Analyst, CERT

---

### Universal Protection and More

Zone Labs understands that when it comes to IM, safety is of paramount importance. Now you can secure your instant messaging activities with IMsecure™ Pro, the first comprehensive security solution that keeps IM conversations private and protects PCs from spammers, identity thieves, hackers and predators who exploit vulnerable IM connections.

Equally important, IMsecure Pro is extremely easy to use. It's not a new client; instead, IMsecure Pro provides universal protection, working seamlessly with AOL Instant Messenger, Yahoo! Messenger and MSN Messenger. It protects you regardless of the service or client you use—even universal clients like Trillian. What's more, IMsecure Pro offers IM defense that is:

- **Transparent:** You don't need to interact with IMsecure Pro to benefit from its protection. Once installed, there's no need to see it again. You won't need to learn any new commands, or change your existing habits or work environment, either.
- **Instant:** IMsecure Pro's ultra-quick setup secures all IM communications at once, across multiple clients, saving you time.
- **Seamlessly upgradeable:** Because it secures the three most popular IM services—as opposed to specific client programs, ports or IP addresses—IMsecure Pro supports both current and future IM clients, so there's no need to update it when you update your IM client.



A Check Point  
COMPANY

# Zone Labs IMsecure™ Pro

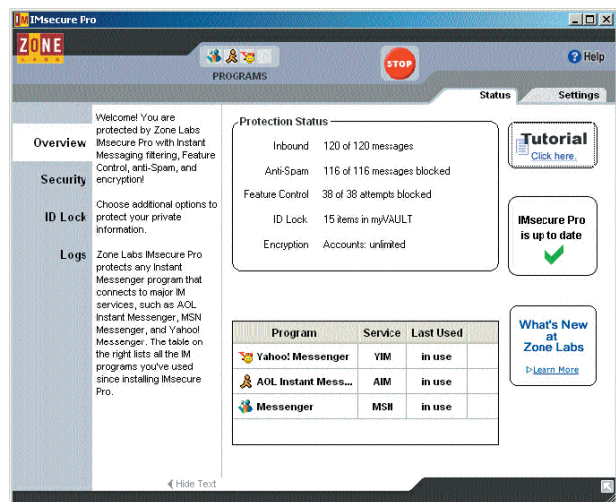
Datasheet

## Protect yourself today

Because IMsecure Pro makes it so easy to protect your instant messaging communications, it's a natural choice. Quite simply, it's the most effective way to keep IM safe.

## Powerful features to protect your IM communications

- **Inbound Threat Protection** guards your PC by filtering invalid messages, executable URLs, buffer overflow and dangerous scripts, as well as unknown IM vulnerabilities.
- **ID Lock** defends against unauthorized sending of sensitive information, such as credit card numbers, from your PC.
- **Spam Blocker** rejects messages sent by people not on your IM contact lists.
- **Message Encryption** protects your IM traffic from being intercepted and read by others.



IMsecure Pro keeps IM conversations private and protects PCs from spammers, identity thieves, hackers and predators who exploit vulnerable IM connections.

### Feature

### Benefit

<b>Universal, IM Service-based Protection</b>	Works with the service and client you already use - even "universal" clients like Trillian, supporting current and future IM clients. Prevents instant messages from bypassing IMsecure Pro.
<b>Transparency</b>	Lets you use IM the way you want to - requires no new learning or changes to existing habits or work environments.
<b>Instant Protection</b>	Saves time by securing multiple IM services very quickly, and all at the same time.
<b>Inbound Threat Protection</b>	Defends your computer and files from hackers, thieves, vandals and predators.
<b>ID Lock</b>	Keeps confidential, personal information private - safe from ID thieves, Internet predators and accidental use by family members.
<b>Spam Blocker</b>	Shields you from inappropriate, time-wasting messages.
<b>Message Encryption</b>	Protects your instant messages from being monitored. Secures IM communication even between different client programs, as long as they communicate over the same service.
<b>Feature Control</b>	Prevents your family members from revealing too much about themselves to strangers, while conserving bandwidth.
<b>IM Lock</b>	Provides ultimate control over instant messaging in case of IM misuse by family members, or extreme IM security vulnerabilities.

### Technical Requirements

IMsecure Pro supports any program that accesses IM services using one or more of the following protocols:

- AOL Instant Messenger (as supported in AIM version 4.3 or later)
- Yahoo! Messenger (as supported in Yahoo! Messenger version 5.0 or later)
- MSN Messenger (as supported by MSN Messenger 4.0 or later or Windows Messenger 4.6 or later)

### System Requirements

- IBM PC or 100% compatible
- Pentium Processor 233 MHz
- 32 MB RAM
- 6MB hard disk space
- Windows 98SE/ME/2000/XP operating system

#### US Headquarters

Zone Labs, LLC  
475 Brannan Street, Suite 300  
San Francisco, CA 94107  
tel 415.633.4500  
fax 415.633.4501

#### European Headquarters

Zone Labs, GmbH  
Frankfurter Str. 181a  
63263 Neu-Isenburg, Germany  
tel +49 (0)6102 366 89 0  
fax +49 (0)6102 366 89 99



A Check Point  
COMPANY